

Bourdon Tube Pressure Gauges

for Clean Dry Air Applications
Stainless Steel Series

Nominal Size 40, 50, 63 mm • Model 131.12

Pressure Gauges

Service intended

Suitable for gaseous, liquid and corrosive media, also in a corrosive environment, **for demanding high purity applications.**
Suitable for CDA (Clean Dry Air) applications.
Fields of application are especially the semiconductor and electronic industry, medical industry, gene technology, biotechnology and pharmaceutical industry.

Design

Safety pattern gauge to EN 562 / ISO 5171,
leak proof, leak rate $\leq 10^{-8}$ mbar • l/s
pressure connection NPT thread (standard) resp. original VCR® Fitting with front sealing pressure connection

Nominal size

40, 50, 63 mm

Accuracy

2/1/2% of span (ASME B 40.1 Grade A) in compliance with accuracy class 1.6 per EN 837-1 /6

Scale ranges (EN 837-1 /5)

0 ... 1 to 0 ... 400 bar (0 ... 15 to 0 ... 6000 psi)
or other equivalent units of pressure or vacuum

Working pressure

Steady: $\frac{3}{4}$ x of full scale value
Fluctuating: $\frac{2}{3}$ x of full scale value
Short time: full scale value

Operating temperature

Ambient: -40 ... +60 °C
Medium: +100 °C maximum

Temperature effect

When temperature of the pressure element deviates from reference temperature (+20 °C):
max. $\pm 0.4\%$ /10 K of true scale value

Pressure connection

Material: stainless steel 316 L (1.4404),
lower mount (LM) or centre back mount (CBM),
surface finish $R_a \leq 0,6 \mu\text{m}$

- $\frac{1}{4}$ NPT - male thread (standard)
- VCR® compatible face seal fittings:
 - with union nut (female)
 - with male nut
- Fixed body 9/16-18 UNF

Pressure element

Material: stainless steel 316 L (1.4404),
< 100 bar: C-type
 ≥ 100 bar: helical type

Movement

Stainless steel



Model 131.12

- VCR® - male nut

Dial

White aluminium, with pointer stop pin
With black/red lettering, dual pressure scale (psi/bar),
inscription "use no oil" or equivalent to prohibition symbol

Pointer

Black aluminium pointer

Case

Stainless steel

Window

Polycarbonate, snap-fit window

Cleaning

Cleaned for oxygen service to ASME B 40.1 (Level I)

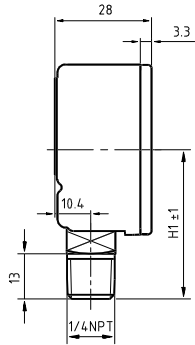
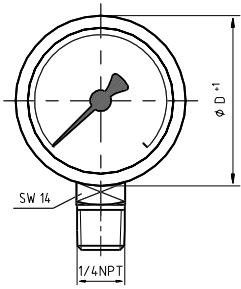
Optional extras

- Better finish for wetted parts
(pressure connection) $R_a \leq 0.3 \mu\text{m}$
- Case stainless steel, electropolished
- Alarm contacts (50 mm)
 - Sliding contact (**Model 811**)
 - Inductive contact (**Model 831**)

Dimensions [mm]

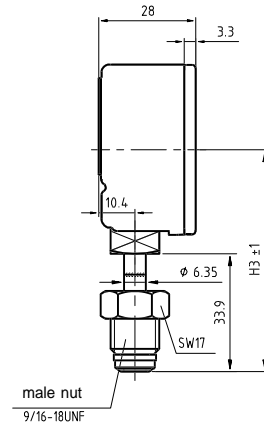
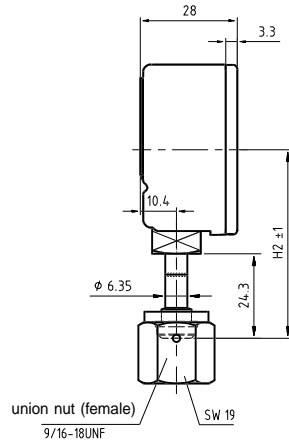
Radial bottom pressure entry (LM)

1/4" NPT male

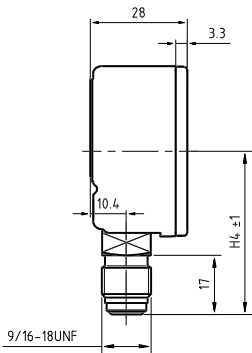


VCR® union nut (female) SS-4-VCR-1

VCR® male nut SS-4-VCR-4



Fixed body 9/16-18 UNF

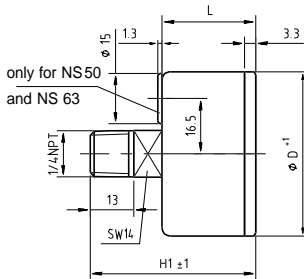


2411 258.01

Nominal size	Dimensions [mm]				
	D	H1	H2	H3	H4
50	49	43	54	64	47
63	62	54	57	67	58

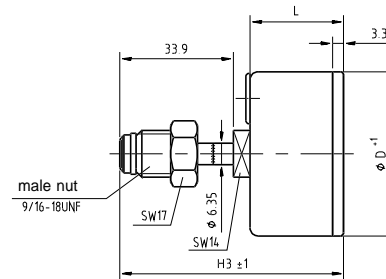
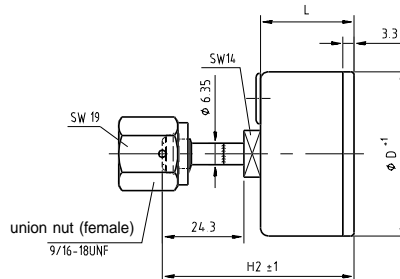
Centre back pressure entry (CBM)

1/4" NPT male



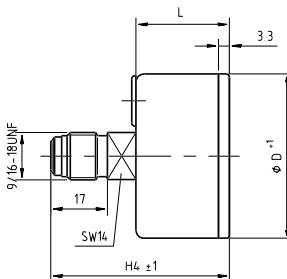
VCR® union nut (female) SS-4-VCR-1

VCR® male nut SS-4-VCR-4



2411 266.01

Fixed body 9/16-18 UNF



Nominal size	Dimensions [mm]					
	D	H1	H2	H3	H4	L
40	39	46	57	67	50	27
50	49	49	57	67	53	28
63	62	49	57	67	53	28

Ordering information

State:

Pressure gauge model / Nominal size / Scale range / Size and location of connection / Optional extras required

Specifications and dimensions given in this leaflet represent the state of engineering at the time of printing. Modifications may take place and materials specified may be replaced by others without prior notice.



WIKAI Alexander Wiegand GmbH & Co. KG
 Alexander-Wiegand-Straße · 63911 Klingenberg
 Tel.: (0 93 72) 132-0 · Fax: (0 93 72) 132-406
<http://www.wika.de> · E-mail: info@wika.de